



SINPRO

EV PRODUCT LINE

BETA Dyne

EV Products & Application



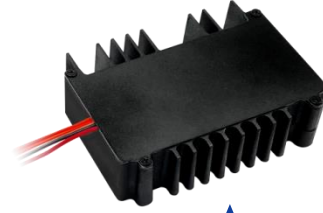
Battery Swap System



Charger for Battery Station



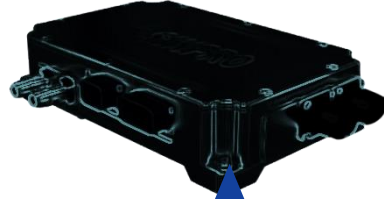
Battery Charger



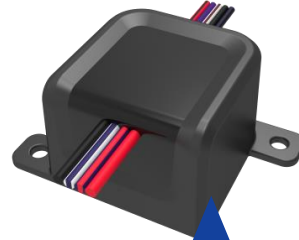
DC to DC



Motor & Motor Driver



On Board Charger



Wiper Motor Controller



Battery Discharger

B to B

Battery Swap System

 SINPRO



Highlight

- Modular Design
- Customization
- Cloud operation interface

B2B & Charging Factory

EV

Battery charging system - Digital control



Power : 300W~700W
Spec : 5A 、 12A

Highlight

- N + 1 redundancy possible.
Installation, repair is convenient,
Even if one unit breaks down,
the other can be used.
- Communication Interface:
CAN BUS (custom available)
- Automatically identify the
charging mode and
increase battery life according
the battery characteristics.

Application

- Battery Swap System
- Quick Charging System

Charger for Battery System

EV

EV/E-Bike Charger and fast charger



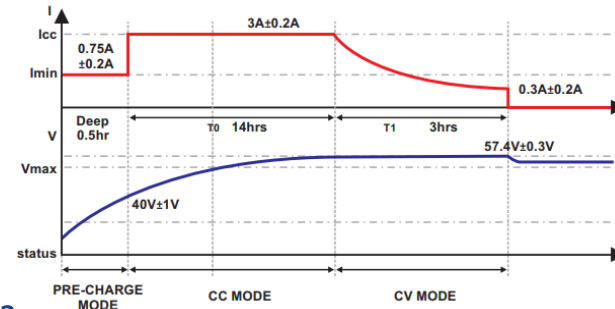
Power : 150W~900W
Spec : 3A , 5A , 12A , 15A

Highlight

- Smart Charging-digital
- Charger for lithium ion battery
- High Efficiency: 94%
- High voltage and current accuracy

Application

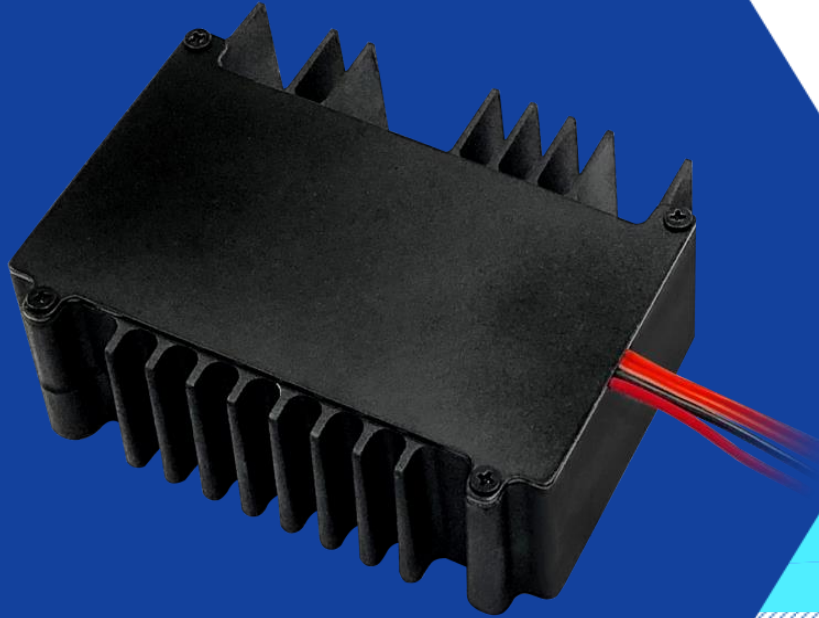
- Commercial Fast charging
- Household charging
- EV/E-bike charger



BPU170-112
Charge characteristic Chart→

PRE-CHARGE CURRENT : 0.75A±0.2A
PRE-CHARGE VOLTAGE : 32-40V±1V
FULL CHARGE CURRENT : 3A±0.2A
FULL CHARGE CUT-OFF CURRENT : 0.3A±0.2A
FULL CHARGE VOLTAGE : 57.4V±0.3V

EV/E-Bike DC/DC converter



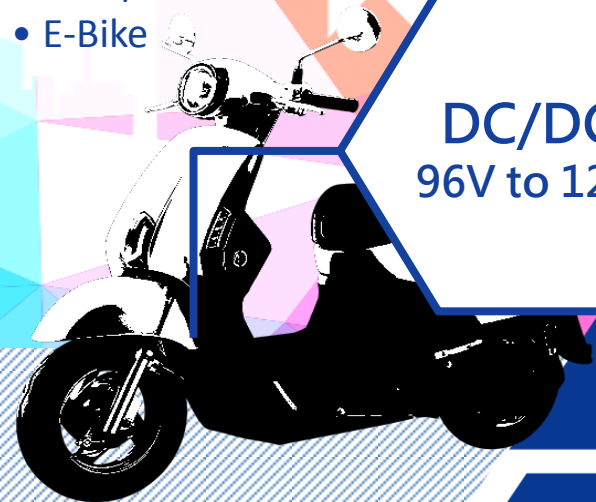
For 96V/48V input battery System

Highlight

- Customization available
- C.C.+C.V. mode
- Varies protection
- IP67 Grade

Application

- Two / Three wheelers
- E-Bike



DC/DC
96V to 12V

DC-DC

EV

7.6KW Motor & Motor driver

GIK7600-103 //

Motor Type :
Interior Permanent Magnet Synchronous Motor
Cooling Method: water cooling system
Max output power: 7.6KW
Max torque: 82 N-m
Maximum efficiency: 90.17%
Minimum efficiency: 42.31%



RFK7600-103

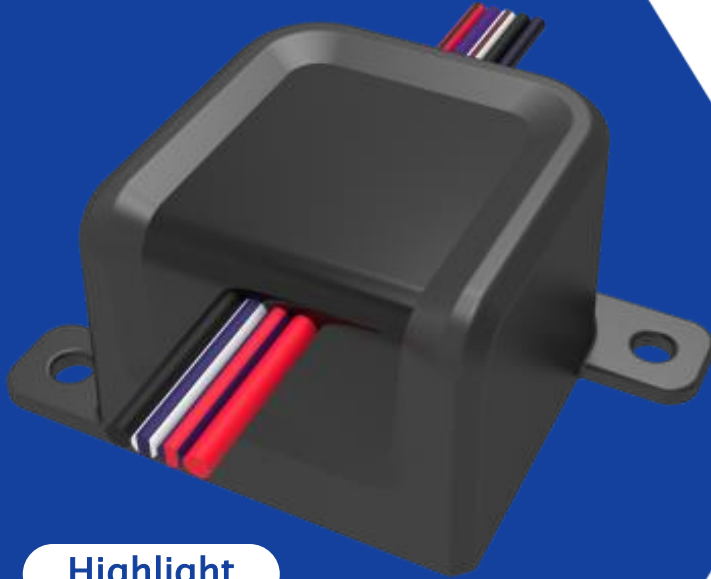
-MAX-

- Rated output voltage: 96V
- Output current: 115A
- Torque: 750kg-cm
- Output power: 7600W
- Revolution(s) Per Minute: 3000rpm

DFK7600-114

- Rated voltage: 96V
- Max voltage: 115V
- Rated power: 7600W
- Rated current: 85A

Wiper Motor Controller



Highlight

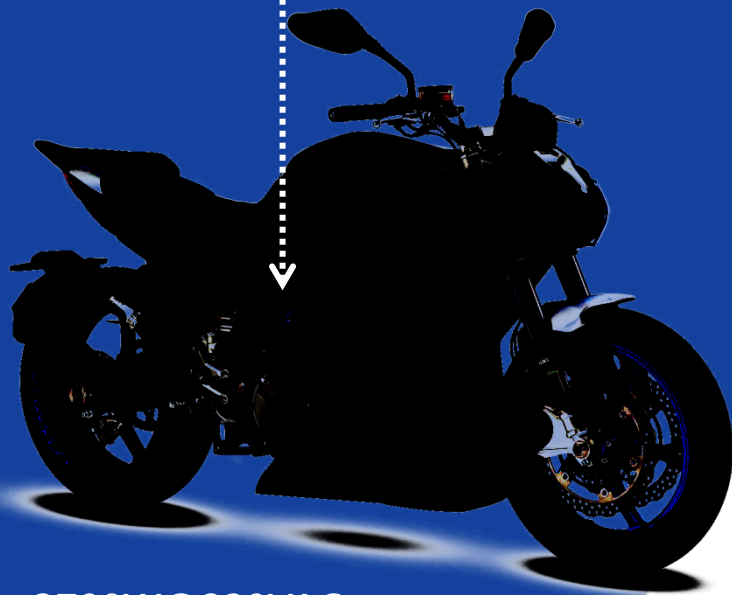
- Vin: 9.5 ~16V
- Vout: 9.5~15V@9A
- W at Vout 12V: 108W



Protection

Built-in E-FUSE, OCP, OVP, OTP.
Input reverse polarity protection
Short circuit protection.

3.7 KW On-board charger



3700W@220VAC
1600W@110VAC

Highlight

- High efficiency up to 93%
- Operating temperature: -35 to +85°C
- CAN bus Interface
- Water-cooled

Application

- Electric motorcycle
- Powered pallet trucks
- Golf carts

Battery Discharger - Customization

- Power : 625W
- 5A discharge





Proudly offered by Beta Dyne

sales@betadynepower.com

www.betadynepower.com

508-697-1993